

# BODY LANGUAGE DANCE CENTER

# SHOW DAY

1. Spring Concert will be held on Saturday, June 17th 2023 at The Patriots Theater at the War Memorial.
2. Students must be at the theater by 2:00 PM. Show will start promptly at 3:00 PM. Students must be dropped off at the theater on the opposite side of the parking lot.
3. ABSOLUTELY NO PARENTS, FAMILY, OR FRIENDS WILL BE PERMITTED IN THE DRESSING ROOMS OR BACK STAGE DURING THE PERFORMANCE. THIS WILL BE STRICTLY ENFORCED. THERE WILL BE A SUBSTANTIAL AMOUNT OF SUPERVISION. PARENTS CAN PICK UP STUDENTS AT THE END OF THE SHOW.
4. We will have designated areas where you will pick up your child after the show. More information will be released about this procedure closer to the show date.
5. Please have performers in FULL costume, hair, and makeup prior to dropping them off in the dressing rooms. MAKE-UP REQUIREMENTS CAN BE FOUND AT THE END OF THIS LIST.
6. **All classes** must have hair in a low bun with a center part. I know some will have braids but keep them on the smaller side. If you have braids and not enough hair to make a bun please purchase a fake sock bun.
7. No jewelry, You may wear diamond stud earrings.
8. If possible, no eye glasses.
9. ABSOLUTELY NO NAIL POLISH this includes toe nail polish
10. Please have all required shoes and tights.
11. NO underwear or bra showing. Nude bra with clear bra straps is acceptable.
12. Video and Flash Photography is not permitted, on any type of recording device including cell phones. Videos will be on sale. TELL YOUR FRIENDS AND FAMILY
13. Students may bring WATER and a small (CLEAN) snacks with them. Please nothing that will leave a stain on costumes.
14. PARENTS: PLEASE LABEL EVERYTHING YOUR CHILD BRINGS INTO THE DRESSING ROOM INCLUDING MAKEUP BAGS OR ANY OTHER KIND OF BAG. This is so we can return these items to you at the end of the show.

# Hair and Makeup for the SHOW!

**MAKE-UP** is as follows:

Makeup can be found at a CVS or any other kind of Drug Store.

**Eyeshadow: Maybelline Designer Chocolate 40 Q**

(comes with Cranberry, Gold, and White)

**Lipstick: Maybelline 657 Nude Nuance**

**Blush:** Neutral pinks and bronze

## \* **How to apply Eye shadow colors**

Top of the eyelid: White,

Crease of eyelid: Cranberry

Bottom: Light Brown

(Blend 3 colors)

\*Fake eyelashes are optional but do enhance the eye greatly- # 105 or 117 (For older students)

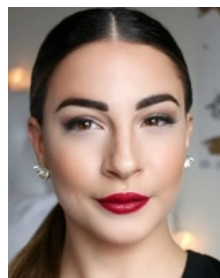
**ABSOLUTELY NO BLUE EYE SHADOW OR HOT RED LIP STICK IS TO BE WORN!**

## **HAIR:**

**All classes** must have hair in a low bun with center part. I know some will have braids but keep them on the smaller side. If you have braids and not enough hair to make a bun please purchase a fake sock bun.



Bun



Center Part

