

Hair and Makeup for the SHOW!

MAKE-UP is as follows:

Makeup can be found at a CVS or any other kind of Drug Store.

Eyeshadow: Maybelline Designer Chocolate 40 Q

(comes with Cranberry, Gold, and White)

Lipstick: Maybelline 657 Nude Nuance

Blush: Neutral pinks and bronze

* **How to apply Eye shadow colors**

Top of the eyelid: White,

Crease of eyelid: Cranberry

Bottom: Light Brown

(Blend 3 colors)

*Fake eyelashes are optional but do enhance the eye greatly- # 105 or 117 (For older students)

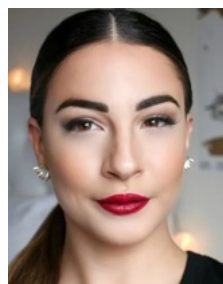
ABSOLUTELY NO BLUE EYE SHADOW OR HOT RED LIP STICK IS TO BE WORN!

HAIR:

All classes must have hair in a low bun with a center part on top. I know some will have braids but keep them on the smaller side. If you have braids and not enough hair to make a bun please purchase a fake sock bun.



Bun



Center Part

